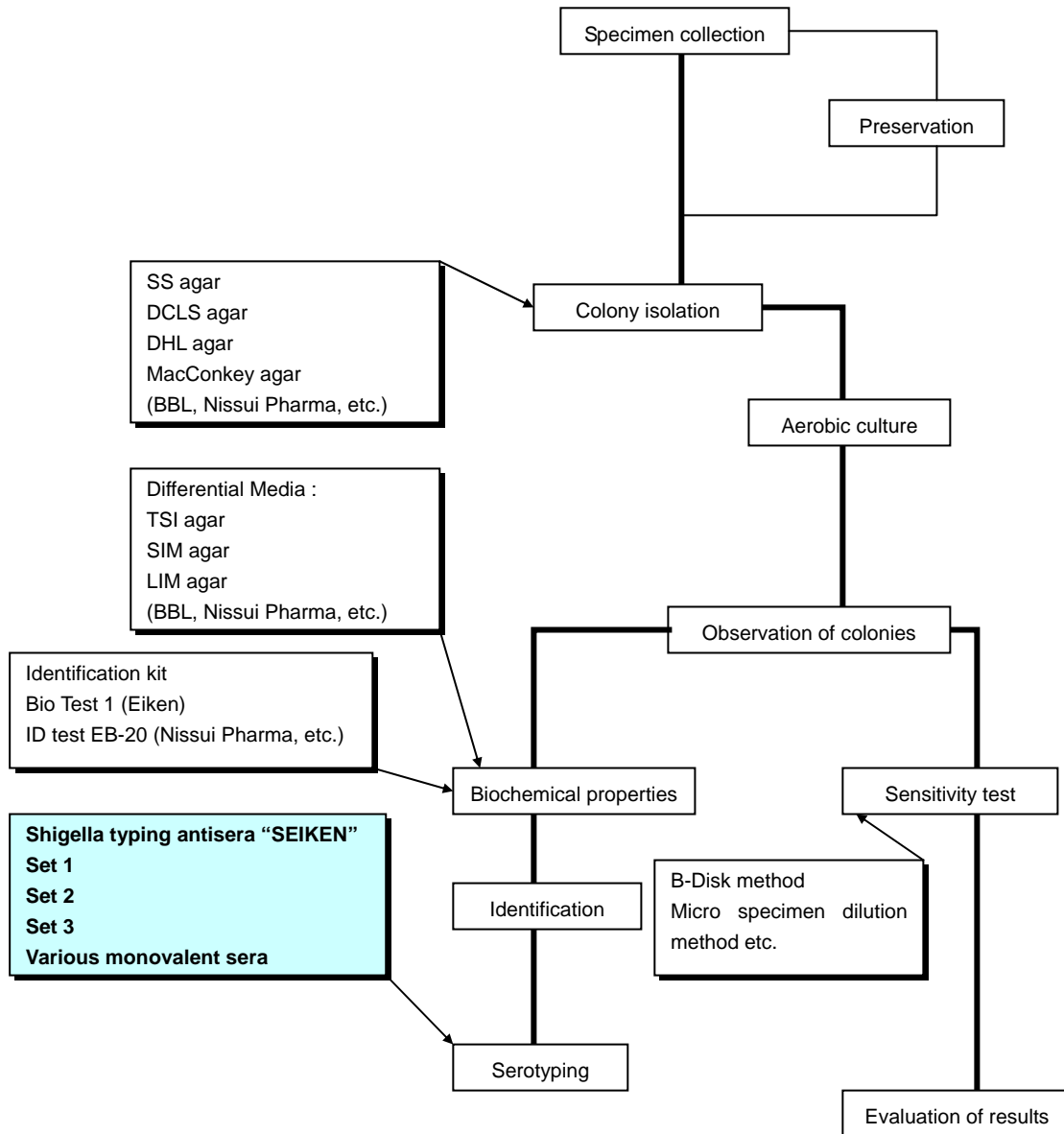


7. Product Guide/Information

(I) *Shigella*



Shigella Antisera			
Set 1 (2mL x 8 polyvalent, 41 monovalent)	294821	Shigella boydii	
Set 2 (2mL x 8 poly, 11 <i>S.flexneri/sonnei</i>)	294838	Polyvalent C	295309
Set 3 (2mL x 8 polyvalent)	294845	Type 1	295095
Shigella dysenteriae		Type 2	295200
Polyvalent A	294982	Type 3	295224
Type 1	294852	Type 4	295248
Type 2	294906	Type 5	295255
Type 3	294913	Type 6	295262
Type 4	294920	Type 7	295279
Type 5	294937	Polyvalent C1	295194
Type 6	294944	Type 8	295286
Type 7	294951	Type 9	295293
Polyvalent A1	294890	Type 10	295101
Type 8	294968	Type 11	295118
Type 9	294975	Polyvalent C2	295217
Type 10	294869	Type 12	295125
Type 11	294876	Type 13	295132
Type 12	294883	Type 14	295149
Shigella flexneri		Type 15	295156
Polyvalent B	295088	Polyvalent C3	295231
Type I	295002	Type 16	295163
Type II	295019	Type 17	295170
Type III	295026	Type 18	295187
Type IV	295033	Shigella sonnei	
Type V	295040	Polyvalent D	295330
Type VI	295064	Phase I	295316
Group (3)4	294999	Phase II	295323
Group 6	295057		
Group 7(8)	295071		

Purpose: Serotyping of *Shigella*

Features: Available in three separate sets to accommodate the requirements of users. All items are also available in single polyvalent or monovalent vial form, including *Shigella dysenteriae*, *Shigella flexneri*, *Shigella boydii*, and *Shigella sonnei*. (Refer to our complete product list above.)

Note: The serotype for *Shigella flexneri* is determined by the combination of the type and group serum. Determine the appropriate serum by referring to the table included in the product insert. Use **o n l y** non-selective culture medium.

Contents of kits:

Set 1: Contains all Denka Seiken *Shigella* sera. (49 vials)

Set 2: Contains polyvalent and monovalent sera for *Shigella flexneri* and *Shigella sonnei*, and polyvalent serum for *Shigella dysenteriae* and *Shigella boydii*. (19 vials)

Set 3: Contains polyvalent sera for *Shigella dysenteriae*, *Shigella flexneri*, *Shigella boydii*, and *Shigella sonnei*. (8 vials)